

TREADLINE WITH ALUMINUM TAPERED ANGLE FRAME

INSERT STYLE:

INSERT COLOR:

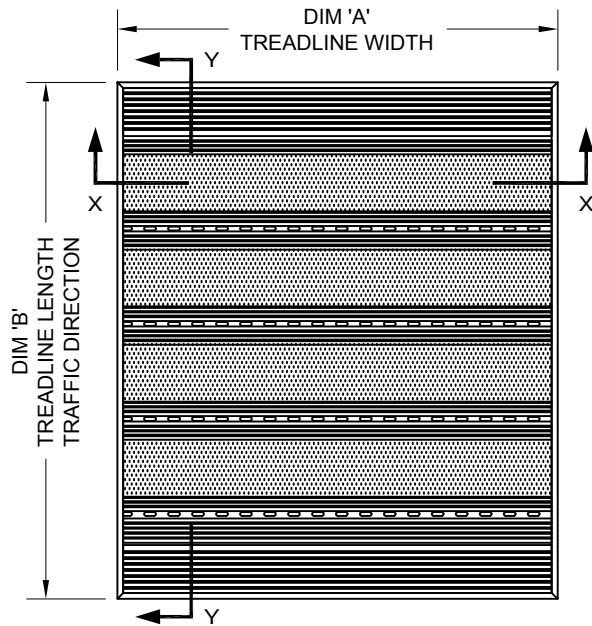
CATALOG NUMBER: T1

PART NUMBER:

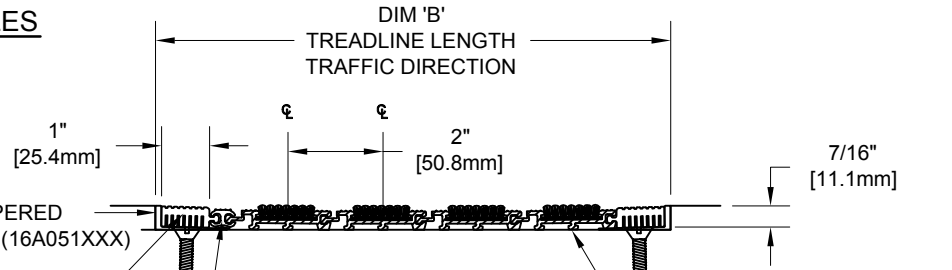
NO.	REVISION	DATE	BY
NO.	F&F RELEASE	DATE	BY

EXTERIOR CARPET T1EC 19C005XXX	HEAVY-DUTY CARPET T1HC 19C010XXX	CARPET T1CP 19C008XXX	VINYL- ABRASIVE T1VA 19N001XXX

TREADLINE INSERT STYLES



TYPICAL PLAN VIEW



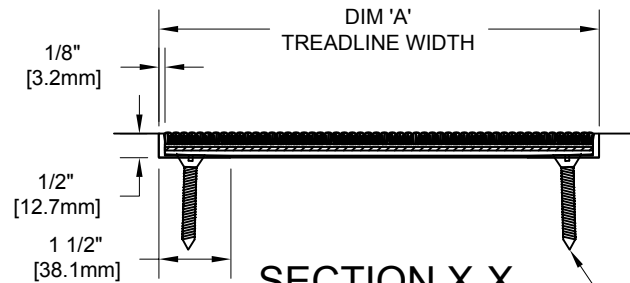
ALUMINUM TAPERED
ANGLE FRAME (16A051XXX)

SQUARE END VINYL
1" (25.4mm) WIDE (17V013XXX)
2" (50.8mm) WIDE (17V014XXX)
TO BE FIELD TRIMMED

DOUBLE FEMALE
CONNECTING RAIL
(18N007XXX)

SECTION Y-Y

EXTRUDED VINYL RAIL
(18N005XXX)



SECTION X-X

MASONRY LAG
FASTENER
(90H006004)
24" (609.6mm) O.C.

NOTES:

*ALL SURFACES IN CONTACT WITH MASONRY ARE TO RECEIVE A COAT OF ZINC CHROMATE PRIMER

*MAX. SINGLE GRID SIZE NOT TO EXCEED 12'-0" (3.66M) IN WIDTH (DIM "A")

*ADDITIONAL SPECIFICATIONS ARE CONTAINED IN THE LATEST C/S CATALOG OR AT C-SGROUP.COM AND ARE CONSIDERED PART OF THIS TRANSMITTAL.

*PLEASE VERIFY TRAFFIC DIRECTION

*DUE TO 2" [50.8mm] MODULE OF TREADLINE, INSIDE OF FRAME DIMENSION SHOULD BE CHANGED ONLY IN INCREMENTS OF 2" [50.8mm] TO AVOID THE USE OF EXTRUDED END VINYL.

*TREADLINE SHALL BE ABLE TO SUPPORT A 300 LB. ROLLING LOAD. LARGER LOADING MAY BE ACCOMMODATED. CONTACT C/S SALES WITH SPECIFIC LOADING REQUIREMENTS.

Construction Specialties, Inc.

C/S GROUP

PLEASE VERIFY ALL	QTY	MARK #	LOCATION	MODEL	DIM 'A' WIDTH	DIM 'B' TRAFFIC DIR	FINISH	NOTES

PROJECT:		
LOCATION:		
CONTRACTOR:		
AGENT:		SHT:
DRG. BY:	DATE:	JOB NO.: