

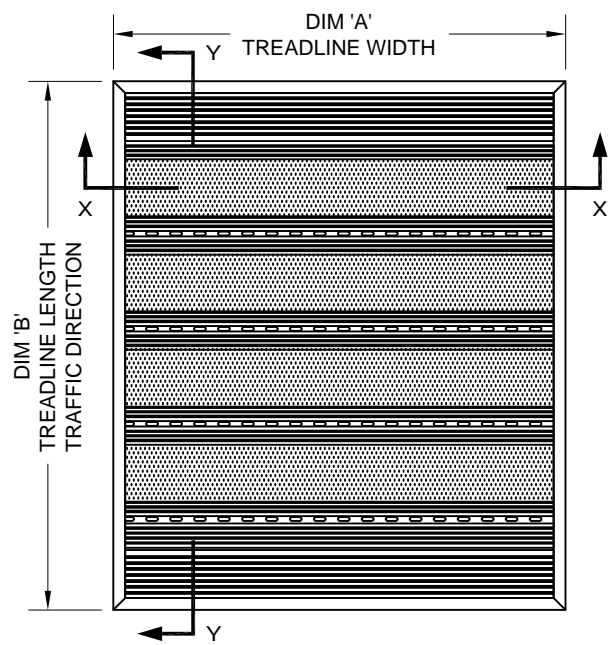
TREADLINE WITH ALUMINUM LEVEL BASE FRAME

INSERT STYLE: INSERT COLOR: CATALOG NUMBER: T1 PART NUMBER:

NO.	REVISION	DATE	BY
NO.	F&F RELEASE	DATE	BY

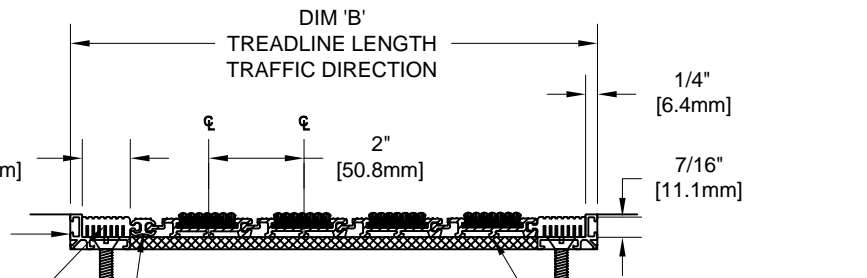
EXTERIOR CARPET T1EC 19C005XXX	HEAVY-DUTY CARPET T1HC 19C010XXX	CARPET T1CP 19C008XXX	VINYL-ABRASIVE T1VA 19N001XXX

TREADLINE INSERT STYLES

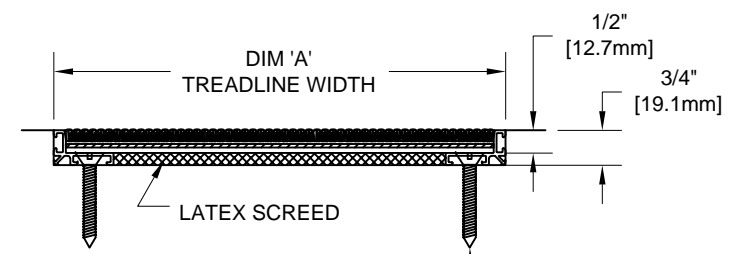


TYPICAL PLAN VIEW

- LEVEL BASE FRAME (17A003XXX)
- SQUARE END VINYL
1" (25.4mm) WIDE (17V013XXX)
2" (50.8mm) WIDE (17V014XXX)
TO BE FIELD TRIMMED
- DOUBLE FEMALE CONNECTING RAIL (18N007XXX)



SECTION Y-Y



SECTION X-X

NOTES:

*ALL SURFACES IN CONTACT WITH MASONRY ARE TO RECEIVE A COAT OF ZINC CHROMATE PRIMER

*PLEASE VERIFY TRAFFIC DIRECTION

*TREADLINE SHALL BE ABLE TO SUPPORT A 300 LB. ROLLING LOAD. LARGER LOADING MAY BE ACCOMMODATED. CONTACT C/S SALES WITH SPECIFIC LOADING REQUIREMENTS.

*MAX. SINGLE GRID SIZE NOT TO EXCEED 12'-0" (3.66M) IN WIDTH (DIM "A")

*DUE TO 2" [50.8mm] MODULE OF TREADLINE, INSIDE OF FRAME DIMENSION SHOULD BE CHANGED ONLY IN INCREMENTS OF 2" [50.8mm] TO AVOID THE USE OF EXTRUDED END VINYLs.

*ADDITIONAL SPECIFICATIONS ARE CONTAINED IN THE LATEST C/S CATALOG OR AT C-SGROUP.COM AND ARE CONSIDERED PART OF THIS TRANSMITTAL.

Construction Specialties, Inc.



PLEASE VERIFY ALL	QTY	MARK #	LOCATION	MODEL	DIM 'A' WIDTH	DIM 'B' TRAFFIC DIR	FINISH	NOTES

PROJECT:		
LOCATION:		
CONTRACTOR:		
AGENT:		SHT:
DRG. BY:	DATE:	JOB NO.: