

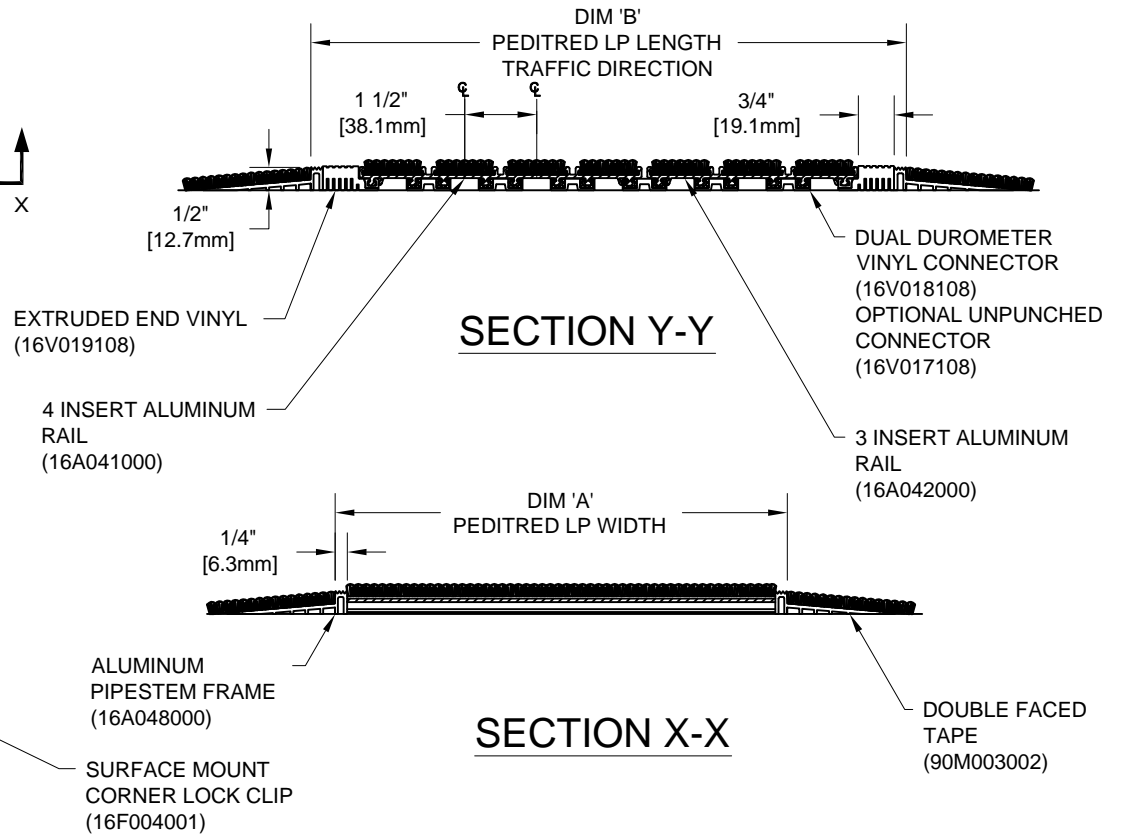
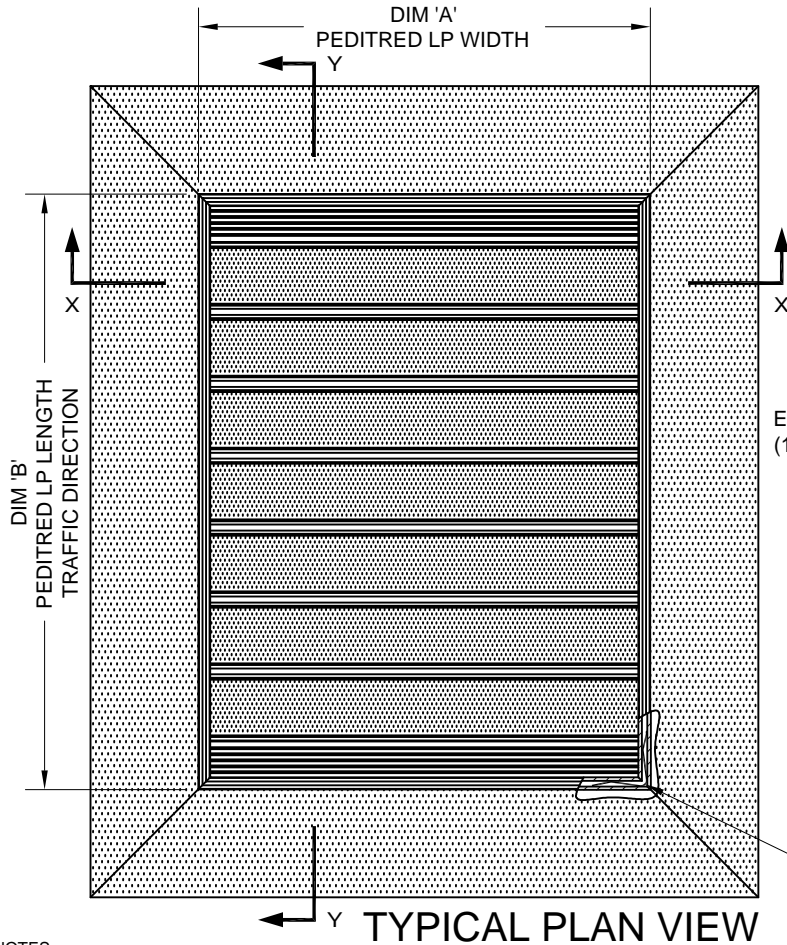
PEDITRED LP WITH ALUMINUM PIPESTEM FRAME

INSERT STYLE:      INSERT COLOR:      CATALOG NUMBER: G3      PART NUMBER:

NO.	REVISION	DATE	BY
NO.	F&F RELEASE	DATE	BY

- |                                   |                                     |                          |                        |                                  |  |  |
|-----------------------------------|-------------------------------------|--------------------------|------------------------|----------------------------------|--|--|
|                                   |                                     |                          |                        |                                  |  |  |
| EXTERIOR CARPET G3EC<br>19C005XXX | HEAVY-DUTY CARPET G3HC<br>19C010XXX | CARPET G3CP<br>19C008XXX | VINYL G3V<br>19V002XXX | VINYL-ABRASIVE G3VA<br>19A003XXX | SERRATED ALUM. INSERT G3SAI<br>19A001XXX | POURED ABRASIVE INSERT G3PA<br>19M002XXX |

PEDITRED INSERT STYLES



NOTES:

\*ALL SURFACES IN CONTACT WITH MASONRY ARE TO RECEIVE A COAT OF ZINC CHROMATE PRIMER

\*MAX. SINGLE GRID SIZE NOT TO EXCEED 12'-0" (3.66M) IN WIDTH (DIM "A")

\*ADDITIONAL SPECIFICATIONS ARE CONTAINED IN THE LATEST C/S CATALOG OR AT C-SGROUP.COM AND ARE CONSIDERED PART OF THIS TRANSMITTAL.

\*PLEASE VERIFY TRAFFIC DIRECTION

\*DUE TO 1-1/2" MODULE OF PEDITRED LP, INSIDE OF FRAME DIMENSION SHOULD BE CHANGED ONLY IN INCREMENTS OF 1-1/2" [38.10mm] TO AVOID THE USE OF EXTRUDED END VINYL.

\*SUPPLIED IN STANDARD MILL FINISH. (OPTIONAL FINISHES AVAILABLE AT ADDITIONAL COST)

\*PEDITRED LP SHALL BE ABLE TO SUPPORT A 750 LB. ROLLING LOAD. LARGER LOADING MAY BE ACCOMMODATED. CONTACT C/S SALES WITH SPECIFIC LOADING REQUIREMENTS.

Construction Specialties, Inc.



PLEASE VERIFY ALL	QTY	MARK #	LOCATION	MODEL	DIM 'A' WIDTH	DIM 'B' TRAFFIC DIR	FINISH	NOTES

PROJECT:		
LOCATION:		
CONTRACTOR:		
AGENT:		SHT:
DRG. BY:	DATE:	JOB NO.: