

PEDITRED LP WITH LEVEL BASE FRAME

INSERT STYLE:

INSERT COLOR:

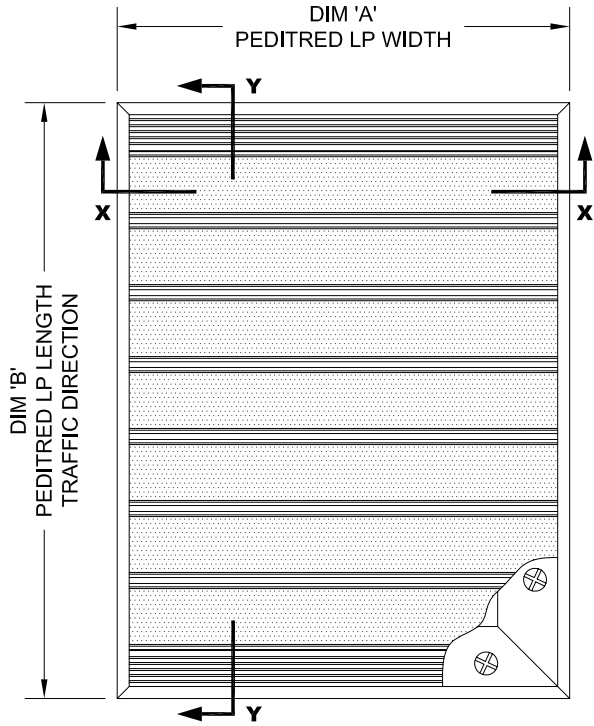
CATALOG NUMBER: G3

PART NUMBER:

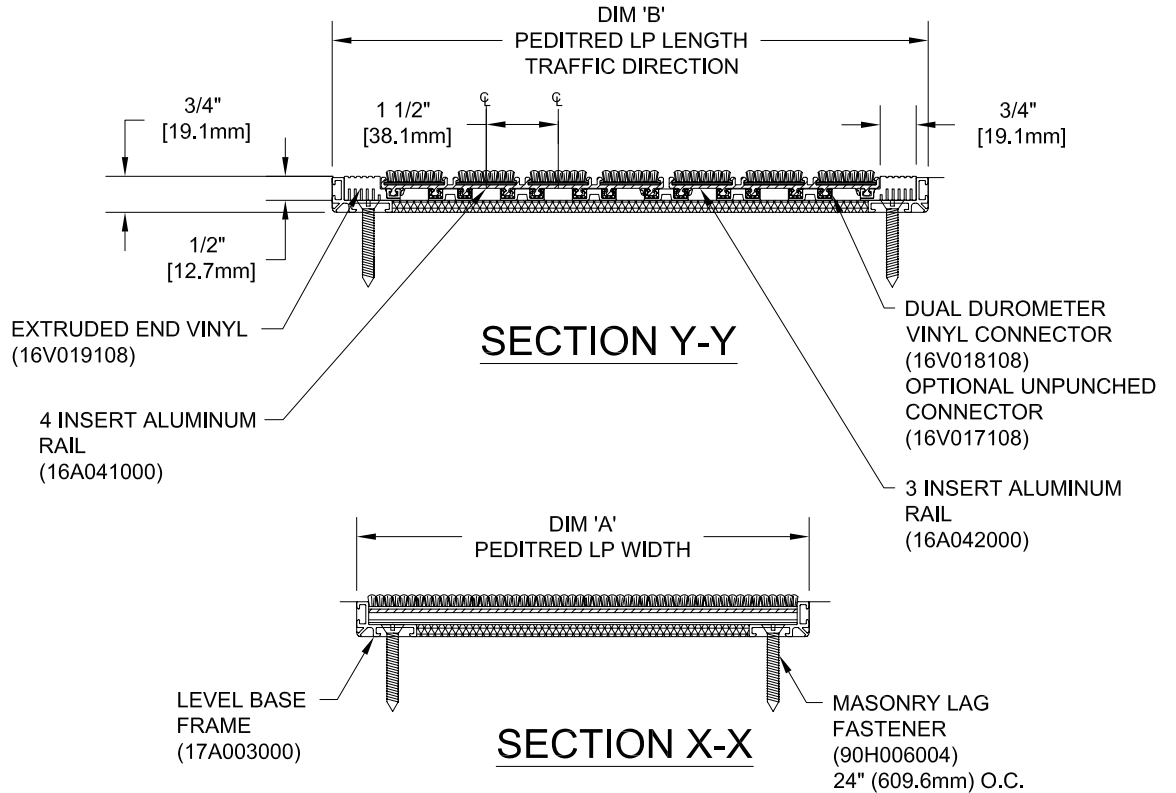
NO.	REVISION	DATE	BY
NO.	F&F RELEASE	DATE	BY

						
EXTERIOR CARPET G3EC 19C005XXX	HEAVY-DUTY CARPET G3HC 19C010XXX	CARPET G3CP 19C008XXX	VINYL G3V 19V002XXX	VINYL-ABRASIVE G3VA 19A003XXX	SERRATED ALUM. INSERT G3SAI 19A001XXX	POURED ABRASIVE INSERT G3PA 19M002XXX

PEDITRED INSERT STYLES



TYPICAL PLAN VIEW



NOTES:

*ALL SURFACES IN CONTACT WITH MASONRY ARE TO RECEIVE A COAT OF ZINC CHROMATE PRIMER

*MAX. SINGLE GRID SIZE NOT TO EXCEED 12'-0" (3.66M) IN WIDTH (DIM "A")

*ADDITIONAL SPECIFICATIONS ARE CONTAINED IN THE LATEST C/S CATALOG OR AT C-SGROUP.COM AND ARE CONSIDERED PART OF THIS TRANSMITTAL.

*PLEASE VERIFY TRAFFIC DIRECTION

*DUE TO 1-1/2" MODULE OF PEDITRED LP, INSIDE OF FRAME DIMENSION SHOULD BE CHANGED ONLY IN INCREMENTS OF 1-1/2" [38.10mm] TO AVOID THE USE OF EXTRUDED END VINYL.

*SUPPLIED IN STANDARD MILL FINISH. (OPTIONAL FINISHES AVAILABLE AT ADDITIONAL COST)

*PEDITRED LP SHALL BE ABLE TO SUPPORT A 750 LB. ROLLING LOAD. LARGER LOADING MAY BE ACCOMODATED. CONTACT C/S SALES WITH SPECIFIC LOADING REQUIREMENTS.

Construction Specialties, Inc.



PLEASE VERIFY ALL	QTY	MARK #	LOCATION	MODEL	DIM 'A' WIDTH	DIM 'B' TRAFFIC DIR	FINISH	NOTES

PROJECT:		
LOCATION:		
CONTRACTOR:		
AGENT:		SHT:
DRG. BY:	DATE:	JOB NO.: