

PEDIMAT WITH ALUMINUM TAPERED ANGLE FRAME AND THRESHOLD FRAME





INSERT STYLE:

INSERT COLOR:

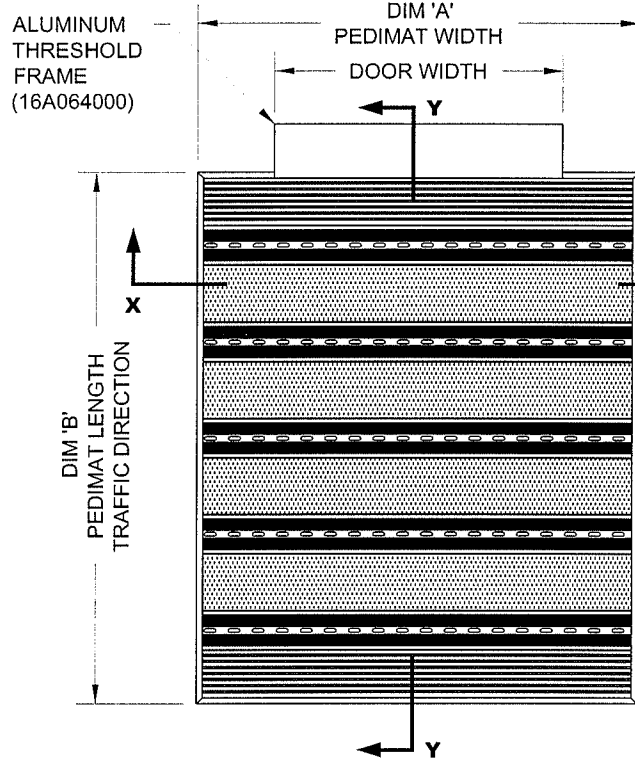
CATALOG NUMBER: M1

PART NUMBER:

NO.	REVISION	DATE	BY
NO.	F&F RELEASE	DATE	BY

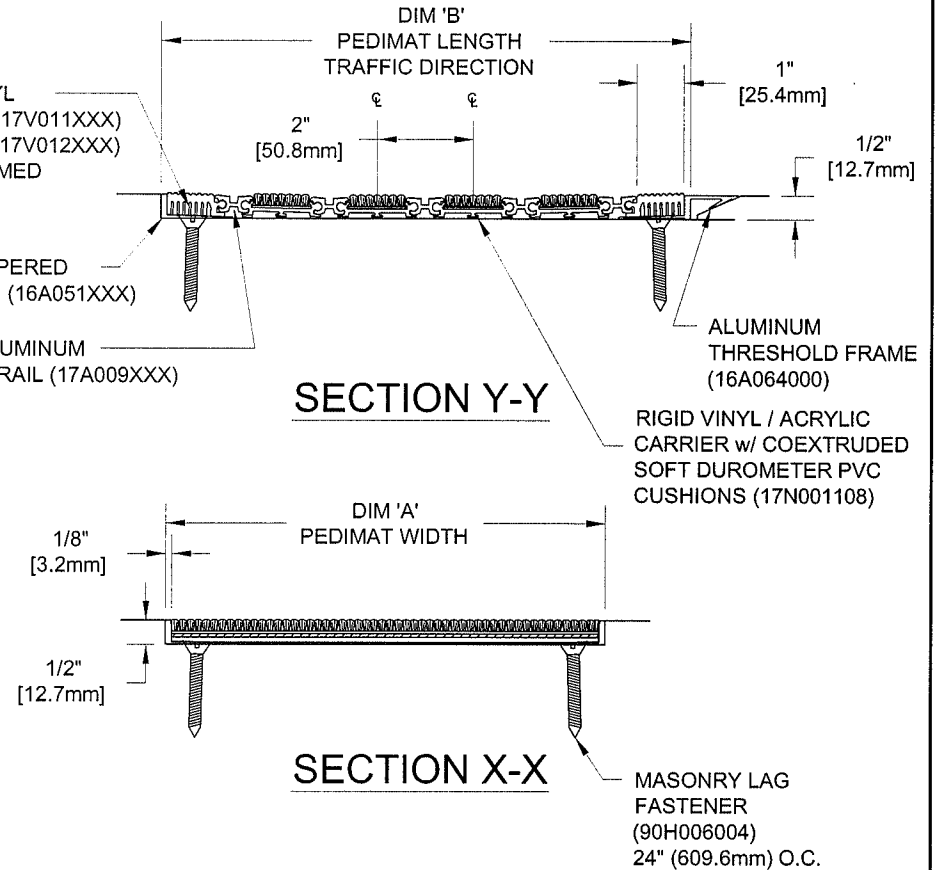
			
EXTERIOR CARPET M1EC 19C005XXX	HEAVY-DUTY CARPET M1HC 19C010XXX	CARPET M1CP 19C008XXX	VINYL M1V 19V002XXX

PEDIMAT INSERT STYLES



SQUARE END VINYL
1" (25.4mm) WIDE (17V011XXX)
2" (50.8mm) WIDE (17V012XXX)
TO BE FIELD TRIMMED

ALUMINUM TAPERED ANGLE FRAME (16A051XXX)
EXTRUDED ALUMINUM CONNECTING RAIL (17A009XXX)



NOTES:

*ALL SURFACES IN CONTACT WITH MASONRY ARE TO RECEIVE A COAT OF ZINC CHROMATE PRIMER

*MAX. SINGLE GRID SIZE NOT TO EXCEED 12'-0" (3.66M) IN WIDTH (DIM "A")

*ADDITIONAL SPECIFICATIONS ARE CONTAINED IN THE LATEST C/S CATALOG OR AT C-SGROUP.COM AND ARE CONSIDERED PART OF THIS TRANSMITTAL.

*PLEASE VERIFY TRAFFIC DIRECTION

*DUE TO 2" [50.8mm] MODULE OF PEDIMAT, INSIDE OF FRAME DIMENSION SHOULD BE CHANGED ONLY IN INCREMENTS OF 2" [50.8mm] TO AVOID THE USE OF EXTRUDED END VINYL.

*PEDIMAT SHALL BE ABLE TO SUPPORT A 300 LB. ROLLING LOAD. LARGER LOADING MAY BE ACCOMMODATED. CONTACT C/S SALES WITH SPECIFIC LOADING REQUIREMENTS.

C/S GROUP

PLEASE VERIFY ALL	QTY	MARK #	LOCATION	MODEL	DIM 'A' WIDTH	DIM 'B' WIDTH	FINISH	NOTES

PROJECT:		
LOCATION:		
CONTRACTOR:		
AGENT:		SHT:
DRG. BY:	DATE:	JOB NO.: