

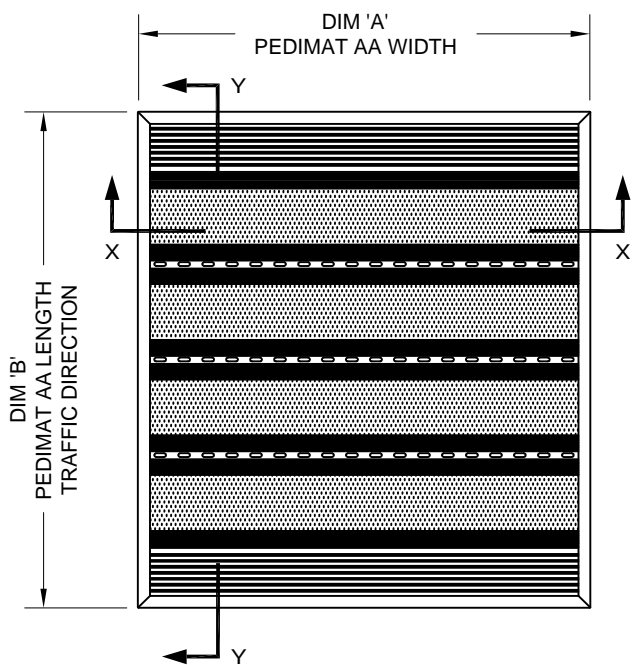
PEDIMAT AA WITH ALUMINUM LEVEL BASE FRAME

INSERT STYLE: INSERT COLOR: CATALOG NUMBER: M2 PART NUMBER:

| | | | |
|-----|-------------|------|----|
| NO. | REVISION | DATE | BY |
| NO. | F&F RELEASE | DATE | BY |
| | | | |
| | | | |

-  EXTERIOR CARPET M2EC 19C005XXX
-  HEAVY-DUTY CARPET M2HC 19C010XXX
-  CARPET M2CP 19C008XXX
-  VINYL M2V 19V002XXX
-  VINYL-ABRASIVE M2VA 19A003XXX
-  SERRATED ALUM. INSERT M2SA 19A001XXX
-  Poured ABRASIVE INSERT M2PA 19M002XXX

PEDIMAT AA INSERT STYLES

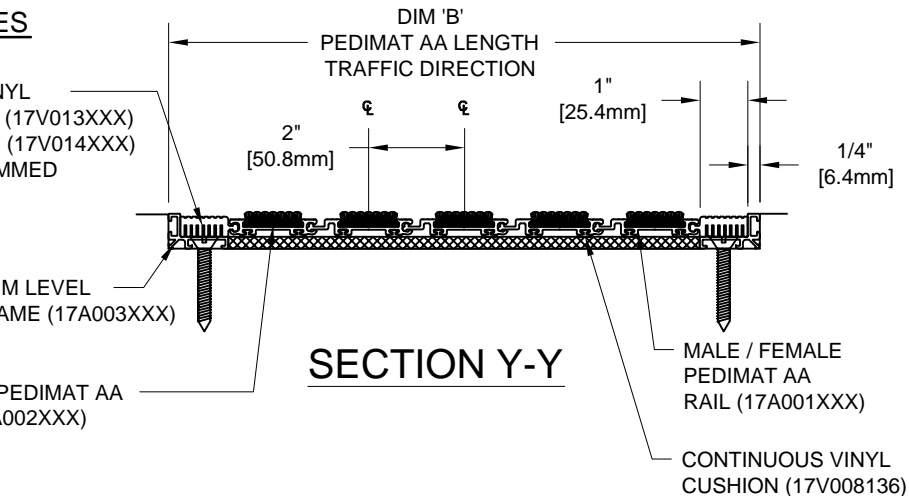


TYPICAL PLAN VIEW

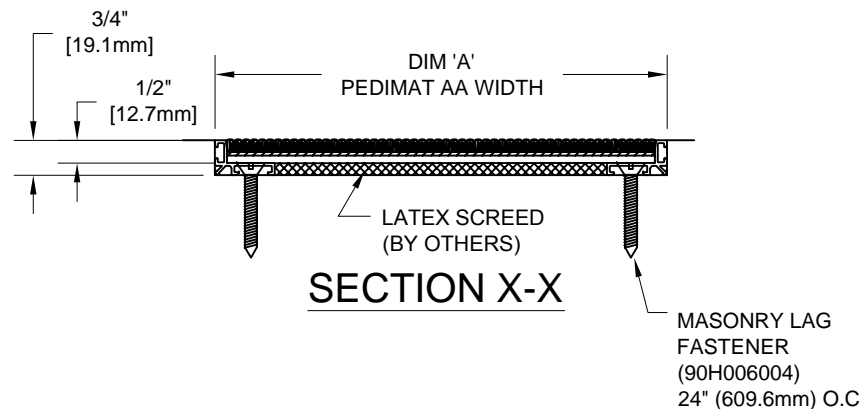
SQUARE END VINYL
 1" (25.4mm) WIDE (17V013XXX)
 2" (50.8mm) WIDE (17V014XXX)
 TO BE FIELD TRIMMED

ALUMINUM LEVEL
 BASE FRAME (17A003XXX)

FEMALE PEDIMAT AA
 RAIL (17A002XXX)



SECTION Y-Y



SECTION X-X

NOTES:

*ALL SURFACES IN CONTACT WITH MASONRY ARE TO RECEIVE A COAT OF ZINC CHROMATE PRIMER

*MAX. SINGLE GRID SIZE NOT TO EXCEED 12'-0" (3.66M) IN WIDTH (DIM "A")

*ADDITIONAL SPECIFICATIONS ARE CONTAINED IN THE LATEST C/S CATALOG OR AT C-SGROUP.COM AND ARE CONSIDERED PART OF THIS TRANSMITTAL.

*PLEASE VERIFY TRAFFIC DIRECTION

*DUE TO 2" [50.8mm] MODULE OF PEDIMAT AA, INSIDE OF FRAME DIMENSION SHOULD BE CHANGED ONLY IN INCREMENTS OF 2" [50.8mm] TO AVOID THE USE OF EXTRUDED END VINYLs.

*PEDIMAT AA SHALL BE ABLE TO SUPPORT A 300 LB. ROLLING LOAD. LARGER LOADING MAY BE ACCOMMODATED. CONTACT C/S SALES WITH SPECIFIC LOADING REQUIREMENTS.

Construction Specialties, Inc.



| PLEASE VERIFY ALL | QTY | MARK # | LOCATION | MODEL | DIM 'A' WIDTH | DIM 'B' TRAFFIC DIR | FINISH | NOTES |
|-------------------|-----|--------|----------|-------|---------------|---------------------|--------|-------|
| | | | | | | | | |
| | | | | | | | | |
| | | | | | | | | |
| | | | | | | | | |

| | | |
|-------------|-------|----------|
| PROJECT: | | |
| LOCATION: | | |
| CONTRACTOR: | | |
| AGENT: | | SHT: |
| DRG. BY: | DATE: | JOB NO.: |